

FY5MA CLASSIC MAST

Characteristics	
Overall Length :	15.99 m
Waterline Length :	15.647 m
Beam max :	4.999 m
Waterline Beam :	4.115 m
Draft GTE / TGTE:	2.519 / 3.036 m
ISO Light Craft Displacement - Mlc (1):	16551 kg
Maximum Load Displacement - Mldc (1):	21326 kg
Keel weight (fin+bulb) GTE / TGTE:	4500 kg
IG	21.950 m
ISP	23.750 m
J	6.400 m
P	22.000 m
E	6.800 m
Main Sail Area	85 mq
Jib Area	63 mq
Genoa Area	73 mq
Staysail Area	33 mq
Gennaker Area	262 mq
Code Zero Area	156 mq
BAD	1.550 m
BAS	1.750 m
Rake	1°
Chainplate Angle	20.30°
Half width at the chainplate	2.254 m

GTE STABILITY (1)	
Draft ISO Mldc	2.519 m
RM 1° Mldc	561 kg x m
RM 30° Mldc	13567 kg x m
RM max Mldc	15674 kg x m

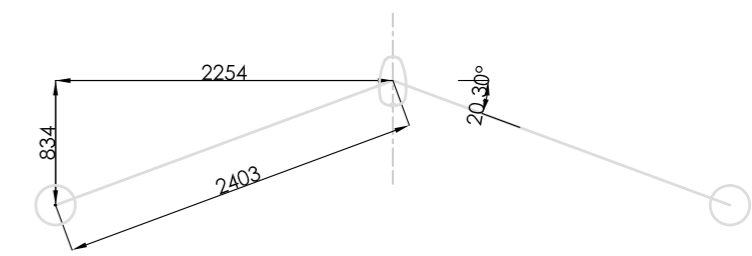
TGTE STABILITY (1)	
Draft ISO Mldc	3.036 m
RM 1° Mldc	588 kg x m
RM 30° Mldc	14362 kg x m
RM max Mldc	16856 kg x m

(1) Based on preliminary weight estimate (FY5MA - Inc.E). It will be the yard responsibility to advise the architect and the spar manufacturer of any change in the boat weight and resulting RM.

(2) All sail measurements to be checked by sail maker.

(3) mainsail drawings are 3d shapes flattened on centerplane
headsail drawings are 3d shapes projected on centerplane

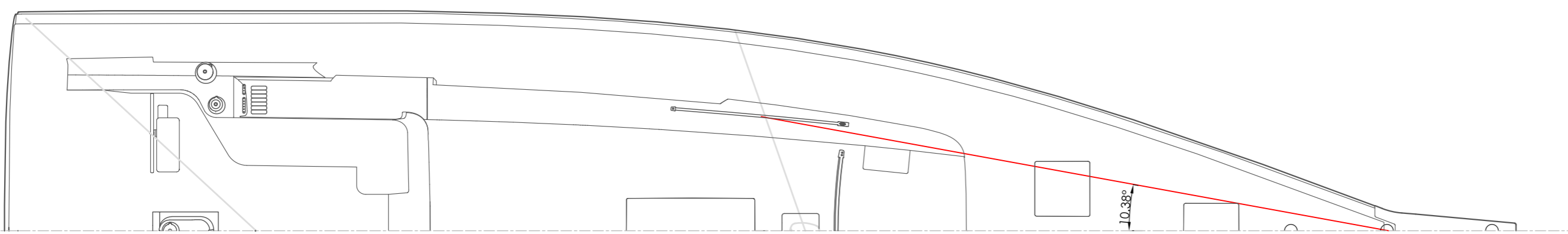
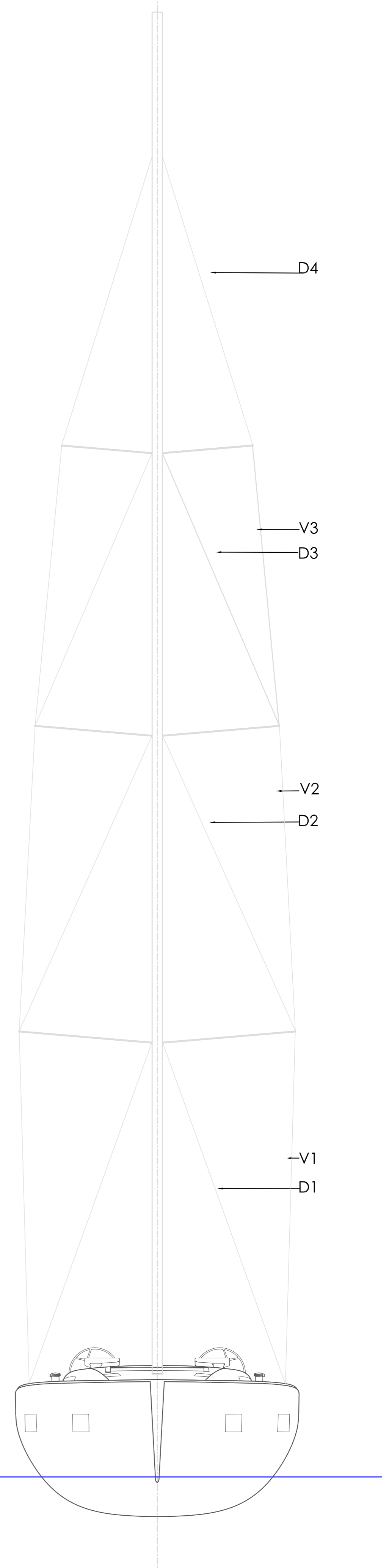
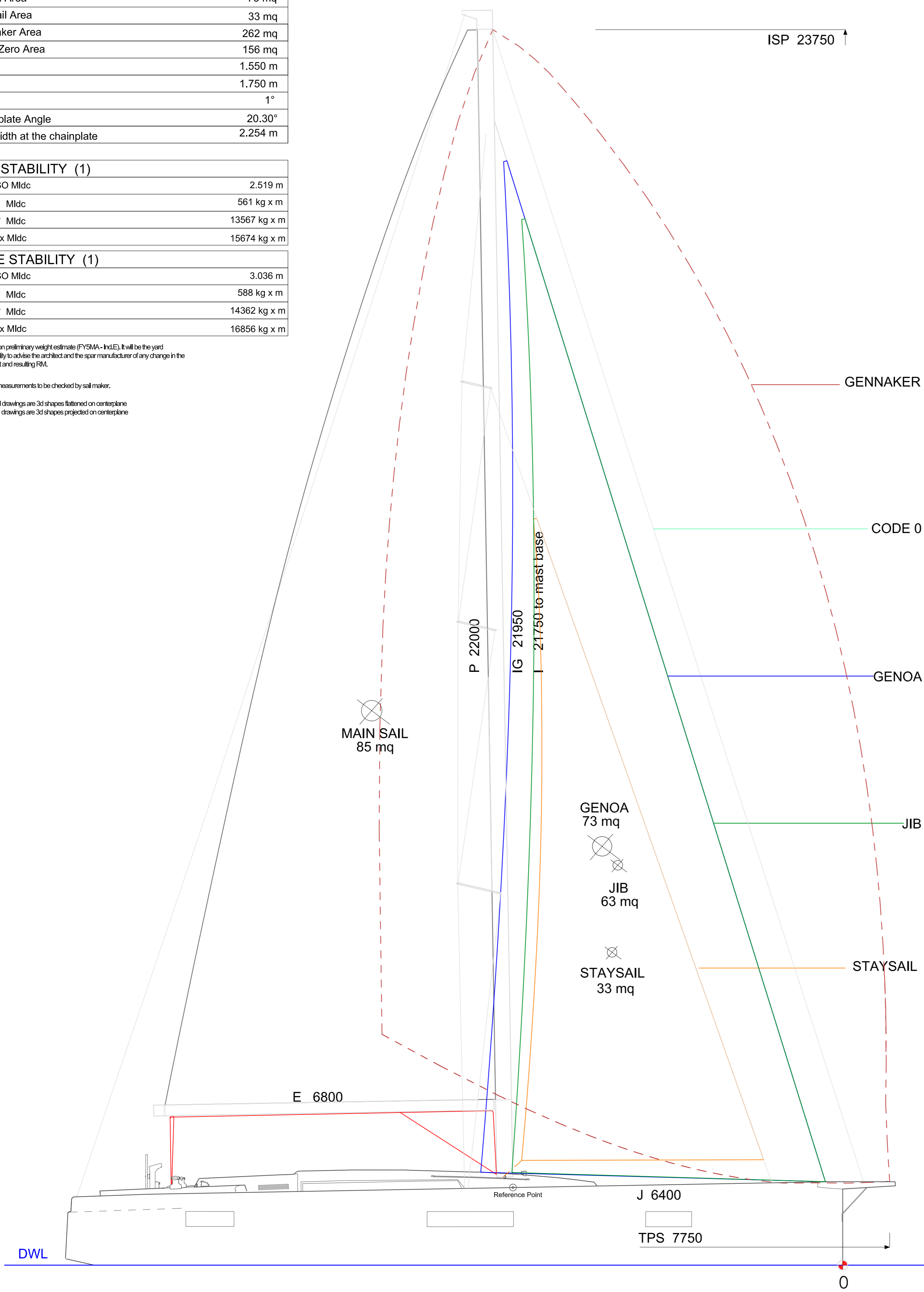
SECTION NORMAL TO THE MAST



RAKE 1°

ISP 23750 ↑

MAST HEIGHT (from DWL) = 25813



BISCONTINI YACHT DESIGN		
WWW.BISCONTINIDESIGN.COM - VIA ZENALE 7 - 20123 MILANO - ITALY		
PROJECT	FY5MA - FIRST YACHT 53'	
FOR	BENETEAU	
DRAWING TITLE	SAIL PLAN FY5MA - CLASSIC MAST	
DATE	21/11/2018	SCALE A1 1:50
DESIGN number	081	
DRAWN BY	FR	CHECKED BY RB
REV.	F	